

JOSEPH GILES

Made in Britain

by Beschläge aus Hamburg



# 2020 - 2021

*A review.*

---

British designers, manufacturers and trade suppliers of architectural hardware for luxury properties around the globe.

---

A dark wood door with a circular handle, slightly ajar, revealing a bright interior space with a wooden floor. The door is the central focus, with a narrow gap showing a brightly lit room with a light-colored wooden floor. The lighting is warm and inviting, creating a sense of connection and openness.

Your connection to  
a beautiful building.

# Contents

---

3

An Introduction

5

2020 Product Highlights

29

Finishes

37

New Talent

45

2021 - Looking Forward



## Looking forward to a good year in 2021.

---

Somebody once told me that one thing is for certain: you can always expect change, and that's never been so well proven as in 2020.

Whilst in some aspects it's been a tough year, we have also found opportunities and we have never been more relieved to be a British manufacturer. This has most definitely provided an unmistakable stability for Joseph Giles and for our clients.

I have highlighted the low's and highs of 2020 and what our clients can look forward to in 2021.

### **Lows**

- April and May were difficult months financially and operationally, our main metal finishing sub-contractors lead times went from 1-2 weeks to 4-5 weeks which had an unmistakable impact on our customers' orders and lead times.

### **Highs**

- We have strengthened our own in-house finishing capabilities to make us less reliant on our external finishing sub-contractors.
- The team has been hugely strengthened by some excellent new arrivals.
- We have continued our quest to make designer's, architect's and contractor's lives a little bit easier by bringing more products to the market with the introduction of new decorative hardware, electrical accessories, wardrobe rails, window hardware, signage and lighting.
- Our bespoke design offering in both hardware and lighting has been strengthened by working with consultant, Mark Harper and our new product program has had an excellent boast with the arrival of Peter Green.
- Our global sales and dealers have held up well.
- We were well placed for office staff to quickly switch to working from home due to some key decisions in previous years to get all our systems on-line.
- Our sister company ENVO Systems was brought into the JG fold where it will be able to run as its own brand but utilise all the financial and operational resources and systems within JG.

### **Looking forward:**

- We will be launching a new website in 2021 which will enable customers to check stock, get prices, download CGI's and even place orders.
- We will be introducing more lighting, new finishes and increasing our existing hardware collections and ranges.
- With more classical and traditional hardware in the works, there will be plenty of new products to watch out for.

We are very much looking forward to what 2021 has in store and hope to continue to and on our relationships with all our clients. Here's to 2021 and beyond!

**Giles Harwood, Director**

# The show must go on. New products for 2020.



LV1177 'Switch' Solid Brass Lever Handle  
photographed in our polished chrome finish



## All new product releases

---

Despite all that 2020 had to offer, this didn't stop us from designing and releasing an array of new products and completely new ranges. We expanded on some pre-existing ranges such as the 'Fonteyn' with the introduction of the 'Fonteyn' Cabinet handle and 'Hurleigh' Cabinet handle, a miniature version of the popular designs was born.



CH1106  
'Buxton' Solid Brass  
Cup Handle



LV1177  
'Switch' Solid Brass Lever Handle



CH1085  
'Fonteyn' Solid Brass  
Cabinet Handle



CP1119  
'Fonteyn' Solid Brass  
Cabinet Pull



CH1054  
'Hurleigh' Solid Brass  
Cabinet Handle



CH1105  
'Penrose' Solid Brass  
Cabinet Handle



LV1165  
'Halsey' Solid Brass  
Lever Handle



LV1173  
'Adelphi' Solid Brass Lever Handle

## Power in Simplicity.

### 'Rohe' Solid Brass Recessed Cabinet Handles

Inspired by Ludwig Mies van der Rohe, who was often associated with the famous aphorism "less is more", the 'Rohe' collection advocates the power clean, neat and straight geometric lines brings to an architectural space. The open space at the forefront of the handle exemplifies the value of open empty spaces and allows the interior to be prime focus.

These beautifully minimalist recessed handles are available in three styles, six sizes and all Joseph Giles signature finishes. It has been designed to be mounted into the leading edge of a cabinet door, providing a functional pull. It is supplied with wood screws and is face-fixed into the rear of the door. The 'Rohe' cabinet handle has been designed to suit cabinets with depths of 19mm, 25mm and 30mm



CH1100  
'Rohe' Solid Brass Recessed  
Cabinet Handle



CH1101  
'Rohe' Solid Brass Recessed  
Cabinet Handle



CH1102  
'Rohe' Solid Brass Recessed  
Cabinet Handle



CH1100 & CH1102 'Rohe' solid brass recessed cabinet handles photographed in our brushed brass waxed finish



## Designed to heighten the appeal of storage.

### Rectangular Solid Brass Hanging Rail

---

Storage has not previously been seen as exciting or appealing until now. Combining the sharp edges and indented details found on buildings like the Tate Modern, with the sleek shape of contemporary residential designs such as the Crossed House in Murcia, Spain, our rectangular solid brass hanging rail has been designed specially to enhance the allure of what may have been considered the mundane.



HR1001  
Solid Brass Rectangular  
Hanging Rail

HR1002  
Solid Brass End Bracket for  
Rectangular Hanging Rail



HR1003  
Solid Brass Central Bracket for  
Rectangular Hanging Rail



## Moulded perfectly to the shape of the human hand. The 'Infinity' Range

---

Our Infinity lever handle, produced in collaboration with the architects Michaelis Boyd, forms the illusion of a perfect circle travelling through an opaque door. It follows the same design ethos as The Round House, the new family home of Alex Michealis. A former MOT centre, the building is formed of oval and round space without corners for a harmonious environment and is full of playful details such as the slide that runs alongside a flight of stairs. The Infinity handle is formed for luxurious comfort, moulding perfectly to the shape of a human hand. Crafted from leather and brass, Infinity will age and patinate well over time, just as we do.



CH1104  
'Infinity' Solid Brass &  
Leather Cabinet Handle

DP1069  
'Infinity' Solid Brass  
Door Pull



LV1175  
'Infinity II' Solid Brass  
& Leather Lever Handle  
with Roseless Rose



CH11072 'Infinity' solid brass cabinet handle  
photographed in our mid antique brass waxed finish



CH1120 'KH Dot' solid brass recessed cabinet handle  
photographed in our brushed brass waxed finish

## Modern. Classic. Timeless.

### Introducing the 'KH' range

---

Designed in collaboration with Kelly Hoppen MBE, the newly released 'KH' range is constructed from the finest grade solid brass and features three ranges, 'Dot', 'Intersect' & 'Clasp'. Each range features matching cabinet handles, cabinet pulls, door pulls and door levers ensuring a seamlessly synchronised appearance across your project.



LV1179  
'KH Clasp' Solid Brass Lever Handle

CH1120  
'KH Dot' Solid Brass Recessed  
Cabinet Handle



CH1110  
'KH Dot' Solid Brass Cabinet Handle

LV1180  
'KH Dot' Solid Brass Lever Handle



DS1027  
'KH Clasp' Solid Brass Door Stop



CP1141  
'KH Clasp' Solid Brass Cabinet Pull



SF1082  
'KH Dot' Solid Brass Recessed Pull with Privacy Turn & Release



CH1109 'KH Clasp' solid brass cabinet handle  
photographed in our brushed brass waxed finish





WN1056 'Fonteyn' Solid Brass Casement Window Set  
photographed in our mid antique brass waxed finish

## It's in The Details. Luxury Window hardware

---

An all-new range of luxury solid brass window hardware designed to complement your interior. The range features designs from our most popular collections such as the Cube, Fonteyn and Ashworth, allowing your interior project to be completely in sync.



WN1077  
'Cube' Solid Brass Espagnolette  
Window Handle

WN1090  
Solid Brass Knurled Casement Stay



WN1068  
Solid Brass Sash Window Lift

WN1079  
'Ball & Socket' Solid Brass  
Narrow Sash Window Fastener





# Experience Joule.

## Electrical Switches

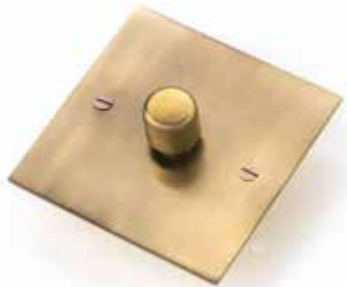
---

We've expanded our range with the 'Joule' family, an all-new collection of solid brass switches. They are precision engineered to offer a flawless range of finishes. For the first time, all your hardware can be completely in sync.



EL1001  
'Joule' Solid Brass Backplate  
with Rocker Switch

EL1002  
'Joule' Solid Brass Backplate  
with Flicker Switch



EL1011  
'Joule' Solid Brass Backplate  
with Dimmer Switch

EL1022  
'Joule' Solid Brass Backplate  
with USB Switch Socket



EL1021  
'Joule' Solid Brass Backplate  
with 13A Switch Socket



BA1039 'Cut' Solid Brass Towel Rail  
photographed in our brushed nickel finish

## Dare to be different. Expanded Bathroom Range

Our newly released range of bathroom products bring a sense of continuity throughout your project. They form part of our pre-existing design families and are available in all of our signature finishes. From our boldly modernist 'Cut' handle, which optimises the use of cutaway spaces to revitalise the traditional toilet roll holder to the more simplified 'Cube' towel rail, there is a design for every project.



BA1041  
'Cube' Solid Brass Towel Rail

BA1040  
'Fonteyn' Solid Brass Towel Rail



BA1042  
'Ashworth' Solid Brass Towel Rail

BA1033  
'Fonteyn' Solid Brass Toilet  
Roll Holder





# Luxury Solid Brass 3D Washroom Signage

---

An all new range of luxury 3D washroom signs designed and crafted in the Britain. Ideal for high-end commercial use, they are available in an array of signature solid brass finishes to ensure a synchronised look across your project.

SN1019  
Solid Brass 3D Sign - Male



SN1020  
Solid Brass 3D Sign - Male with Hair



SN1021  
Solid Brass 3D Sign - Female



SN1022  
Solid Brass 3D Sign - Female with Hair



SN1023  
Solid Brass 3D Sign - Disabled



SN1024  
Solid Brass 3D Sign - Baby Change



SN1025  
Solid Brass 3D Sign - Shower



CH1079 'Montgomery' Solid Brass Cabinet Handle photographed in our polished midnight black finish



CH1079 'Montgomery' Solid Brass Cabinet Handle  
photographed in our polished midnight black finish

## Luxury Solid Brass Fire Signage

---

Our new range of fire signs banish the mundane, traditional style of fire signs. Made from solid brass in a variety of shapes to suit every interior and with concealed fixings, they can be matched perfectly with our other hardware finishes, all while fully complying with BS5499 regulations.

Available in Round, Square and Traditional styles.



Round Solid Brass Sign

Square Solid Brass Sign



Traditional Solid Brass Sign



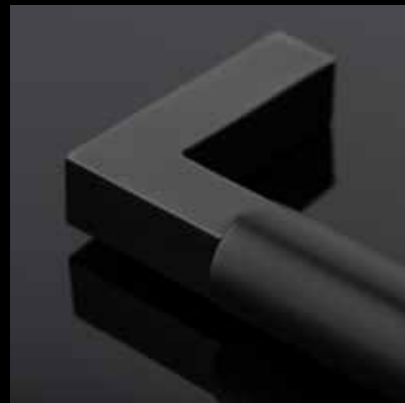
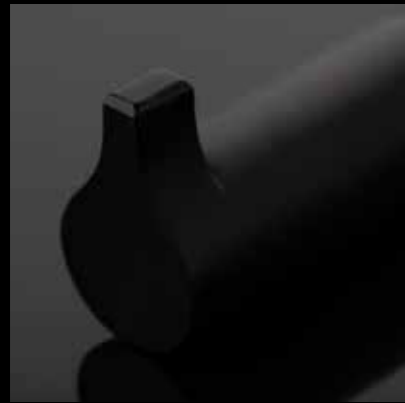
# New Finish. Midnight Black.

CH1097 'Hanworth' Solid Brass Cabinet Handle  
photographed in our brushed midnight black finish

## All new black finishes

---

With black finishes often being associated with charm, elegance and sense of timelessness, our newly released polished and black finishes have taken our designs to an all-new height. The brushed version has a cool tone and is a perfect match for modern design schemes and is a popular choice for kitchen and bathrooms. Whilst the polished version is wrapped in sleek modernity and is ideal for interiors wanting an added flair to the standard black finish.



CH1079 'Montgomery' Solid Brass Cabinet Handle  
photographed in our polished midnight black finish

A close-up photograph of a brass cabinet handle. The handle is a long, horizontal bar with a textured surface. The texture is created by an acid-etching process, resulting in irregular, jagged, and somewhat triangular shapes that are recessed into the metal. The lighting is dramatic, highlighting the metallic sheen and the depth of the etched areas. The background is dark, making the brass stand out.

A unique  
element added  
to every piece.

CH1081 'Acid Etched' Textured Solid Brass Cabinet Handle  
photographed in our mid antique brass waxed finish



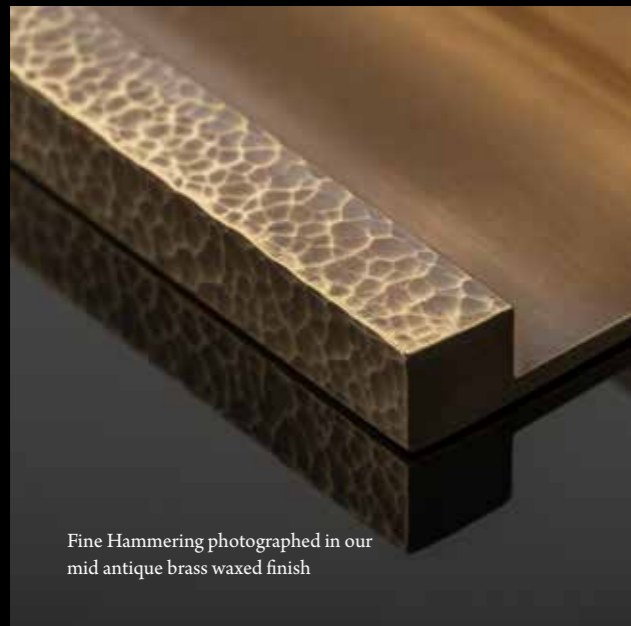


## Metal Textures

---

Our textures are either hand applied using traditional black smithery methods, produced through traditional casting methods or via state-of-the-art CNC equipment.

Rolled & Hammered Texture photographed in our mid antique brass waxed finish



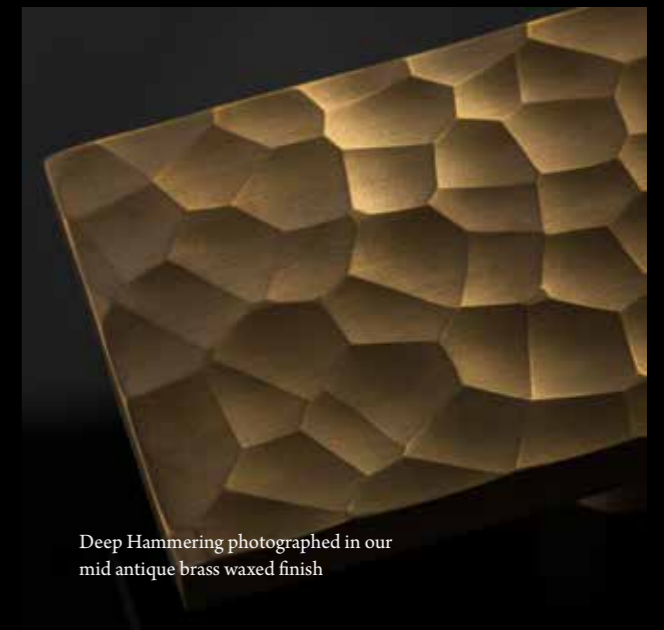
Fine Hammering photographed in our mid antique brass waxed finish



Tidal Ridge photographed in our brushed nickel finish



Molten Texture photographed in our mid antique brass waxed finish



Deep Hammering photographed in our mid antique brass waxed finish



Diamond Knurling photographed in our dark bronze waxed finish



# New arrivals.







## Ray Tester

### Finishing Department Manager

---

**How long have you worked within the industry? / Tell us a bit about your career so far?**

I have worked within the finishing industry for 39 years. I worked within the lighting trade initially for 38 years for a company called Dernier & Hamlyn. I started there just before my 17th birthday as a trainee but most of what I know is actually self-taught by just watching others at work.

I was made redundant a week in to the first lockdown before joining Joseph Giles in November 2020.

**What has been one of your most memorable projects? /What have you enjoyed most in your career?**

Throughout my career, I think the best aspect has been being able to create things with my hands and bringing raw materials to life. One of my most memorable projects to date has been Windsor castle. Helping to restore the original light fittings and also to create new ones after the terrible fire that destroyed a large part of the building, is almost surreal.

**How are you finding working with Joseph Giles?**

Helping Joseph Giles with their new adventure in building a new finishing department has been nothing short of exciting for me. I am looking forward to helping to push the company with all of our new projects.

I am finding it very exciting, being able to help Joseph Giles with their new adventure in building a new finishing department and to help push the company forward with all of their new projects - looks like this is a duplicate of the first part?

**Can you tell us anything about what to look out for in 2021? / Anything else that we should know about you?**

Hopefully we will all be looking forward to a better year. One where we don't have to worry about who we mix with.

What else can I say about me? I'm a big family man with two daughters and 4 grandchildren. They are my light and soul.

Also I make decorative cakes for any occasion as a hobby and one of them even featured for a programme on Channel 4 a few years ago!



## Peter Green

### Product Development Leader

---

**How long have you worked within the industry? / Tell us a bit about your career so far..**

My career is quite diverse so far, I have spent the majority of my career working in Interior products and ironmongery and within the automotive industry.

I have always tried and so far, succeeded to work with companies that have a strong British background, as I feel strongly that our creative and Engineering industry is still the best in the world. Within the Automotive industry I was lucky to start out at Jaguar Land Rover where I worked on their new launch of Range Rovers and became a leader on the new launch of the new discovery. More recently, I worked with McLaren automotive to launch four great cars.

In terms of my interior products journey- I have always had a passion for interior products, and the details that make a place feel like home. I have worked on exciting projects including the World Trade Centre building 7, and occasionally I catch a glimpse of one of the products I worked on in a Hollywood blockbuster which is always fun!

**What has been one of your most memorable projects?**

I've worked on many exciting projects so far in my career but there are a couple that are real highlights for me. This year I was drafted to manage and improve the Body in White for the McLaren Speedtail. One of the areas where I was heavily involved was the innovative active rear ailerons, which are part of the aerodynamic features on the vehicle, that open and close during driving. The second was developing a range of American Switches and Sockets for a famous British Hardware brand, which was a great project as it developed a stunning range, which opened massive opportunity in the US market.

**How are you finding working with Joseph Giles?**

Although I am still relatively new at Joseph Giles, so far It has been enjoyable. I have a great Product Development team, who are both talented and extremely driven to deliver excellent products and have found the same from the rest of the company. This has been a very welcoming and warm environment to work in, even when starting during the middle of a Pandemic. What is great is there is also a great range of existing products, which we hope to grow and evolve in the coming months and years to really enhance the Joseph Giles name.

**Can you tell us anything about what to look out for in 2021?**

I think 2021 is going to be an exciting year at Joseph Giles. We are working very hard to develop products that will help grow our product range- looking at Lighting, Evolving our Electrical range, and adding some exciting new design styles and materials to our range.





## Mark Harper

### Bespoke Lighting Consultant

---

#### How long have you worked within the industry?

I've worked in the bespoke lighting industry for over 35 years now. I originally wanted to be a commercial artist and took a little job in a lighting company to make a bit of money. I ended up staying with the company in one guise or another for 35 years until it sadly went into administration at the start of April 2020. My career has seen me travel the world in such places as Europe, The Middle East, Russia, Japan and the US, working on many projects such as The King of Jordan's new palace and private residence in Amman, The Burj Al Arab, the Ambassador's Residence in Moscow, parliament buildings in Stormont and British embassies in Athens and Tokyo.

On home soil my projects have included places such as Buckingham Palace, Windsor Castle, St Paul's Cathedral, the Tower of London, 10 & 11 Downing Street, the Foreign Office and the Palace of Westminster.

#### What has been one of your most memorable projects?

I think St Paul's cathedral would be most notable due to historic value of the project, but there have been so many over the years it's really difficult to narrow them down.

Being lucky enough to have travelled, visited and worked in some of the most amazing places in the world. Having the opportunity to put my mark and input into some of the most prestigious buildings. The people I have met and the friendships I have built along the way has also been a very special part of my career so far

#### How are you finding working with Joseph Giles?

I'm really enjoying working with JG. The offer to come aboard in a consulting capacity to start a light range as well develop bespoke pieces was a great opportunity for me to hopefully bring 35 years of experience into the company. The staff at Joseph Giles are super friendly and supportive and I'm looking forward to working alongside them for many more years, helping to design and produce beautiful top end lighting and hardware for their clients.

#### Can you tell us anything about what to look out for in 2021?

A more classic range of hardware to expand our range and some that will also be based on classic British cars. We are also looking to produce another couple of light fittings based round the classic British car early in 2021. We have also talked about projects for later that year but are going to keep them under wraps for now....we don't want to give everything away!

# New Beginnings.

Looking forward to 2021.



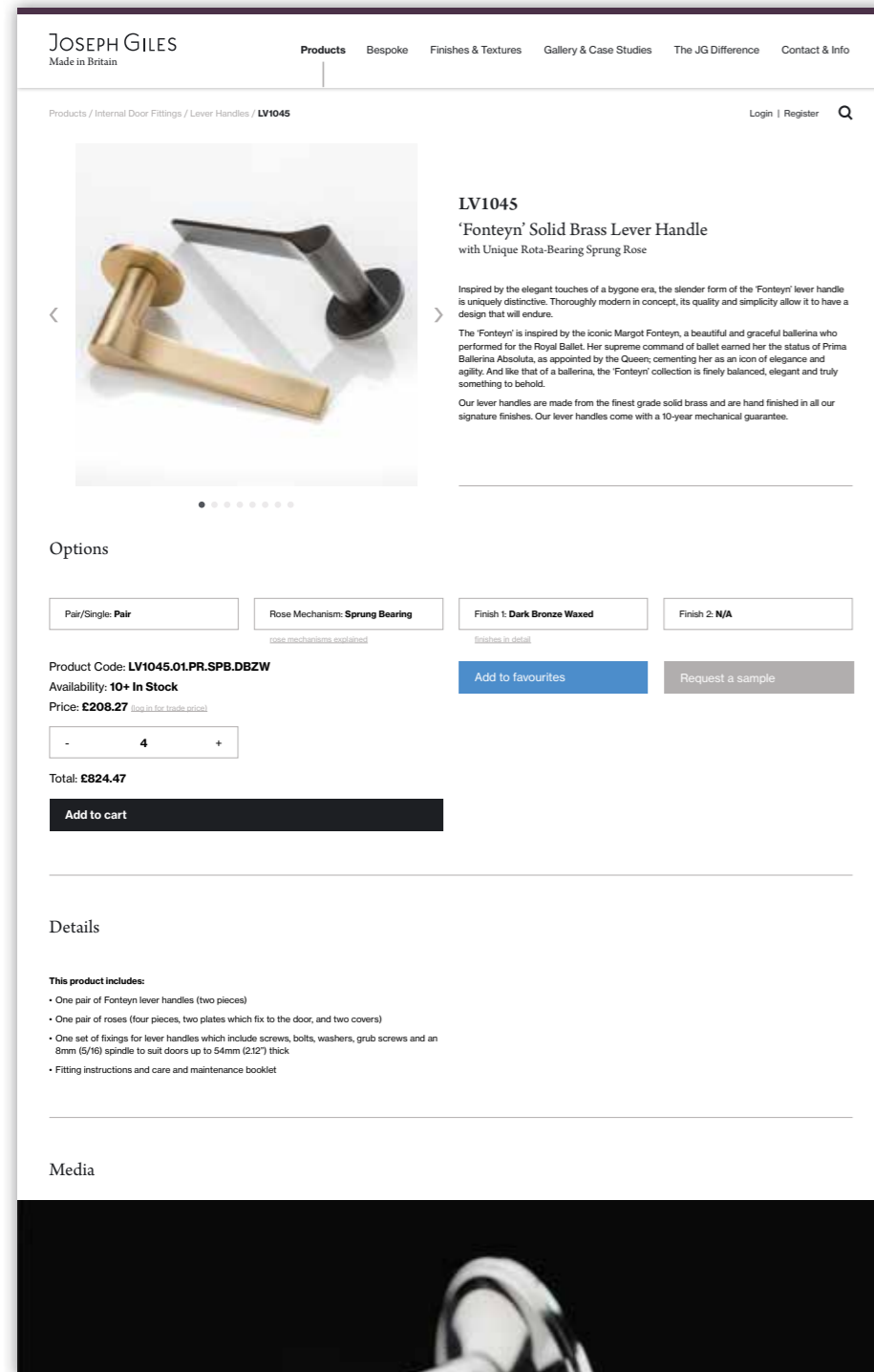
LW1003 'Fonteyn' Wall Light with Fluted Glass Shade  
photographed in our polished brass waxed finish



# 2021.

## New Website

We are excited to announce that we will be launching a brand-new website in 2021! Alongside many other things the new website will enable customers to check stock, get prices, download CGIs and even place orders directly online. This will reduce response times and allow some clients to have immediate access to pricing and quotes.



*swift*

## Increased range available for quick shipping

We will continue to expand on the Swift fast shipping service as well as introducing magnetic locks and electrical items.



The 'Fowler' collection, including door knob, door pull, cabinet handle and cabinet pull, photographed in a selection of our signature finishes



## New Products and Finishes

---



LW1004 'Fonteyn' Wall Light with Clear Glass Shade photographed in our dark bronze waxed finish

## New Lighting Range

Our product offering will continue to expand with the introduction of standard and bespoke lighting and the continuous increase of our existing hardware collection and ranges.

## New Finishes

Following the success of our 'Midnight Black' finish, we have been working on an array of completely new finishes which will be released in 2021. These finishes will be an expansion on current ranges as well as introducing all-new finishes to the market.



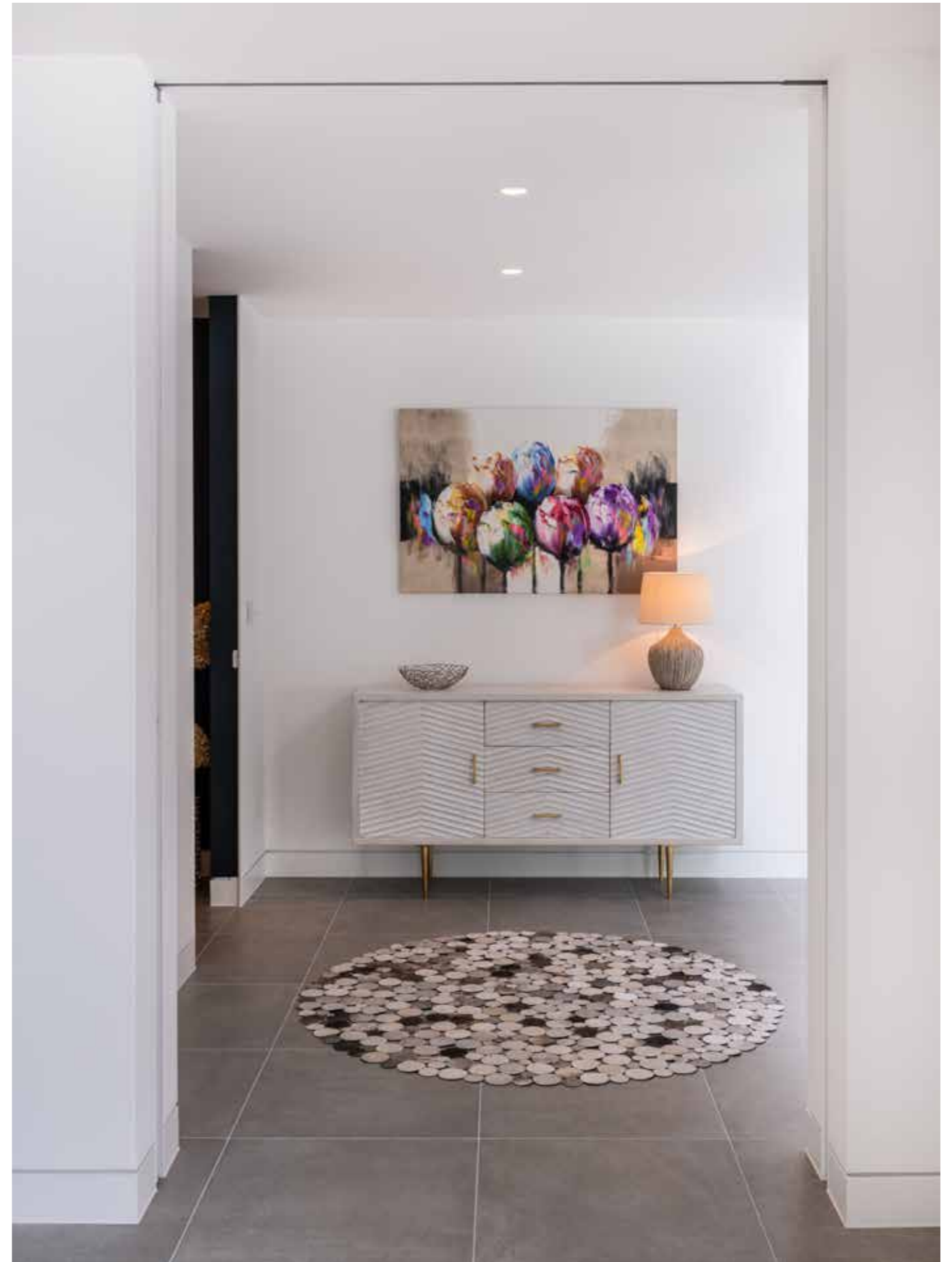
DP1028 'Molten Texture' Solid Bronze Door Pull Handles photographed during the finishing process

## ENVO Systems Pocket Sliding Door Solutions

---

Our sister company ENVO Systems, which offers high-end internal door solutions such as the unique pocket door system, will now be incorporating with Joseph Giles. By combining Joseph Giles with ENVO Systems, we can better assist our clients on projects where internal door solutions may also be of need.

Recently completed project featuring products supplied by both ENVO Systems and Joseph Giles.





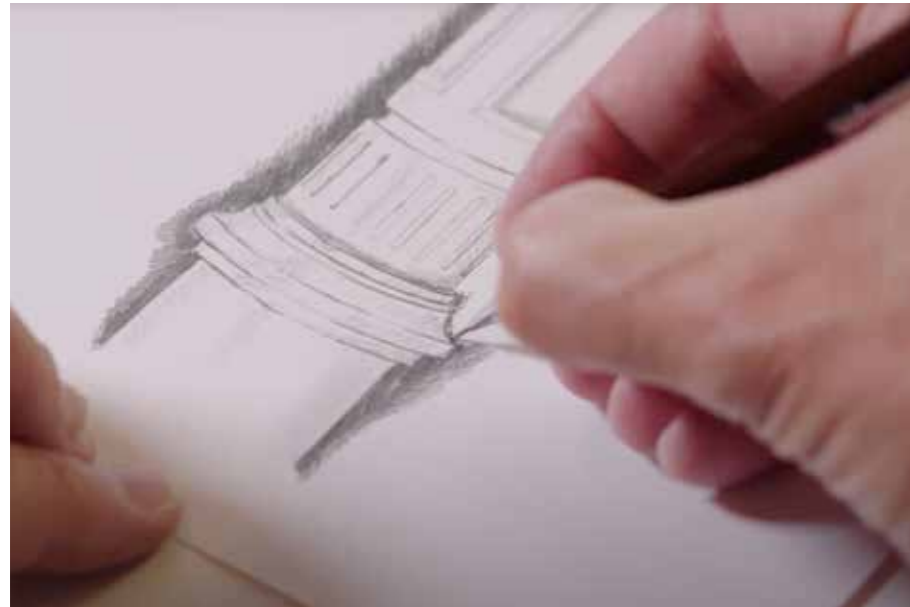
## Classical Designs, Magnetic Locks and Improved Lead Times.

With more classical and traditional hardware in the works, there will be plenty of new products to watch out for

The introduction of magnetic locks in 2021 will be a huge asset to our clients. These locks have been in product development for the past year to ensure that a safe, secure and sleek product could be achieved. We are very excited to share this with you this year.

We understand the importance of time in an interior project and so we have been working tirelessly to perfect our operational capabilities and are now confident that we can reduce our lead times in 2021. This will allow you to receive your items faster so projects can be completed on time.

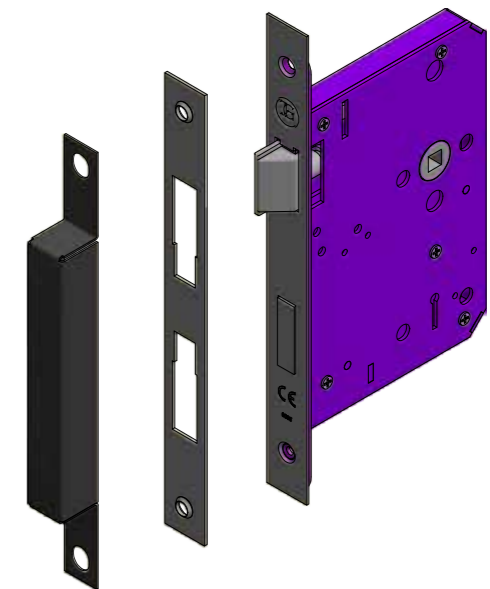
Though it was tough, we are grateful for what 2020 has taught us and the relationships that we have been able to build and refine. We are looking forward to what the new year has in store and hope to continue building on our relationships with of clients and expanding on what we have to offer as a company.



New ranges to include classical and traditional hardware.



We are working on our internal efficiencies and will be reducing our lead times.



Introducing magnetic locks for silent operation and more aesthetically pleasing appearance.



## Contact Us

---

Beschläge aus Hamburg  
Brandstücken 35  
22549 Hamburg  
T.: 040-593 610 30

[info@beschlaege-aus-hamburg.de](mailto:info@beschlaege-aus-hamburg.de)  
[www.beschlaege-aus-hamburg.de](http://www.beschlaege-aus-hamburg.de)  
Ust.Id.Nr.: DE812952410  
AG HH HRA: 117366  
Fax: 040-593 610 390

---

Designed in Britain, made in Britain.

